



Buzz Westfall Justice Center

CLIENT:
St. Louis County

REPRESENTATIVE OFFICE:
Langendorf Supply Co.

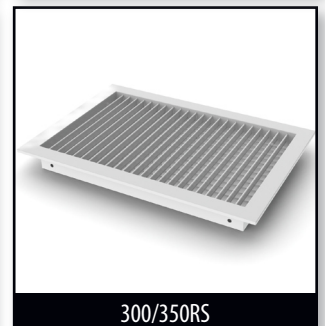
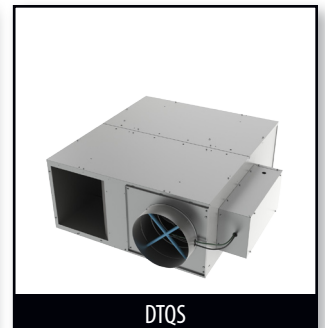
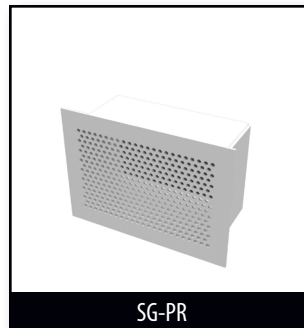
ARCHITECT/DESIGNER:
HOK Architects

LOCATION:
Clayton, Missouri

ABOUT THE PROJECT

Originally known as the St. Louis County Justice Center until 2004, the Buzz Westfall Justice Center is a 528,000 square foot facility. Its purpose is to provide a safe and secure environment for staff to monitor and supervise incarcerated individuals. The 14-story justice center contains 960 jail cells, three criminal courtrooms, one grand jury room, an evidence processing room, office space, and space for medical treatment.

The Buzz Westfall Justice Center utilizes the Direct Supervision Management Philosophy to monitor the general population housing areas. This style, unlike the traditional linear jail style, places correctional officers directly within the inmate living units and provides the officers with immediate visual observation and continual interaction with the inmates. This constant, proactive monitoring of the inmates allows the officer to handle problems before they get out of hand. In addition, Direct Supervision (DS) enables the





officer to communicate expectations of behavior, provide the incentive for positive behavior and hold inmates personally accountable for violation of rules.

THE TITUS SOLUTION

When dealing with facilities that house potentially dangerous individuals, nothing is overlooked. The air outlets must be well equipped to reduce harmful incidents while delivering superior performance. Titus supplied several security grille products for this facility. The SG-PR was the primary security grille featured within the justice center. It is a maximum security grille that provides superior performance without compromising security and safety. Another feature of this grille is it prevents concealment of dangerous or potentially lethal objects. Other security grilles utilized in the facility were the SG-TDC and the SG-LFO.

Titus was also able to supply a wide assortment of grille and diffuser products as well as terminal units to further enhance the airflow within the justice center. Several perforated ceiling diffusers, 300/350R grilles can be seen throughout the facility. The terminal units selected to provide the airflow were the DESV and the DTQS. The DESV is unique as it incorporates many design features that increase performance, decrease service and installation





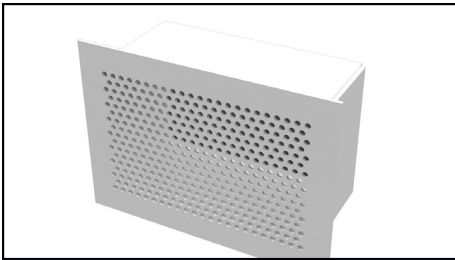
costs, and offer increased value, over and above this basic function. The DTQS fan powered terminal provides constant air delivery and temperature blending while maintaining the VAV energy savings at the central fan.

THE END RESULT

The Buzz Westfall Justice Center is a Direct Supervision facility that detains adults and certified juveniles who are pre-trial or serving county sentences. The design and management style is significantly different from traditional linear jails, for example, there are no bars. Inmates are offered many programs and services and are rewarded for positive behavior. This style has yielded traditionally safer environments and the justice center provides support to the inmates to change their lives before being released.

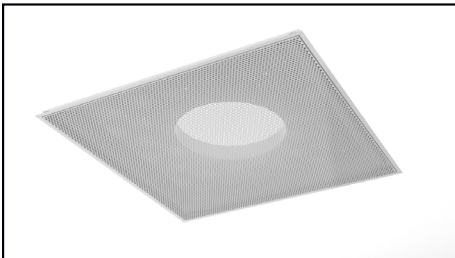


Titus Products List



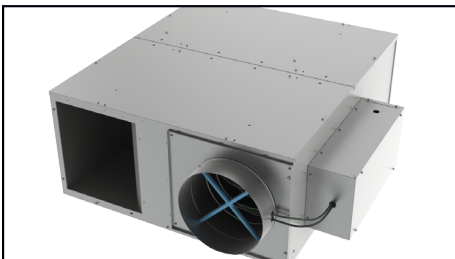
SG-PR

The SG-PR is a maximum security grille that provides superior performance without compromising security and safety.



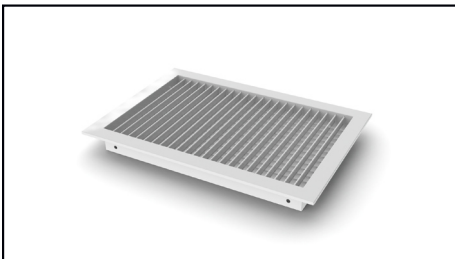
PARPAS

Titus perforated diffusers can be selected for a round pattern to maximize capacity or star pattern to maximize throw.



DTQS

DTQS fan powered terminal provides constant air delivery and temperature blending while maintaining the VAV energy savings at the central fan.



300/350RS

Titus' 300 / 350 series grilles define the standard for the industry. With high quality and competitive pricing these grilles form the backbone of a standard offering that will meet any application requirements.